

883 RESIDENCES

Affordable residences located
in the heart of Beirut

Features

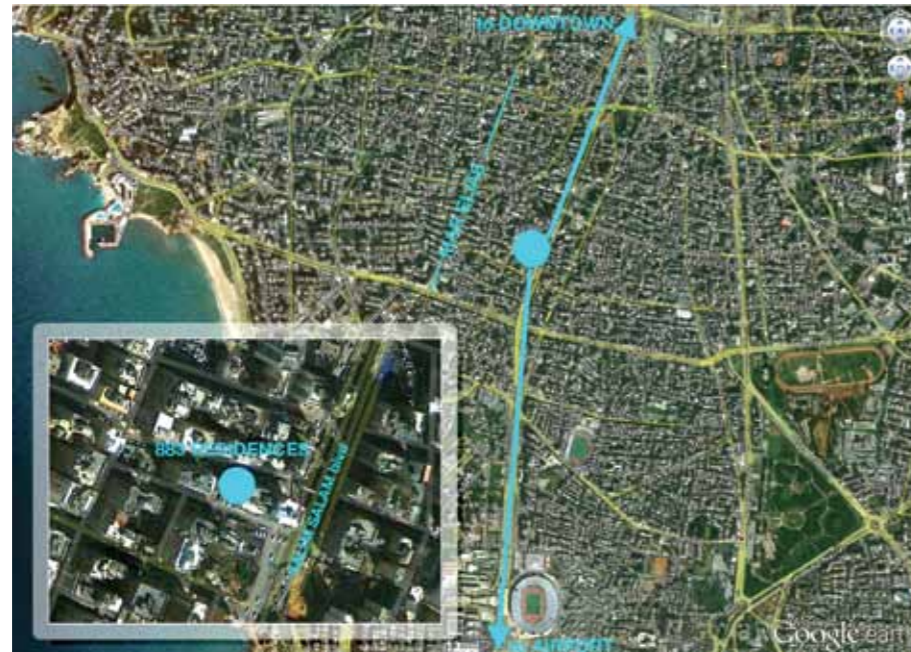
"883 Residences" consists of 10 story residential building with one car park basement and a ground floor level. The development has a total of 20 apartments, each of an approximate area of 145 sq.m. consisting of the followings:

- Entrance Hall
- Living room
- Dining room
- 3 bedrooms (1 master)
- Balconies (family room or bedroom 3)
- 2 bathrooms
- Kitchen
- Maid's room + bath

The basement and the ground floor are intended for building entrance and parking usage.

Welcome to "883 Residences" where affordability meets exceptional living. "883 Residences" is a medium rise development with a modern architecture, strategically located 15 minutes from Rafik Hariri international airport, 10 minutes from downtown Beirut and at a walking distance from Mar Elias commercial street.

"883 Residences" is another visionary development by Diar S.A.R.L. It offers quality finishes, fine materials and exceptional design from Spectrum Consultant Engineering making it a sound investment.



Amenities

- Provision for AC outlets
- Video intercom
- 2 main lifts
- Generator
- Water well
- 1 Dedicated car park per apartment



UNIT AREA: 145 sqm

NOTE

1. All room dimensions area measured to structural elements and exclude wall finishes and construction tolerances
2. All dimensions have been provided by our consultant architects
3. All materials, dimensions and drawings are approximate. Information subject to change without notice
4. Actual suite area may vary from the stated area. rawings not to scale. The developer reserves the right to make revisions
5. Calculation of the apartment area is measured as the area bounded by the exterior face all the exterior walls
6. The apartment's area measured at typical floor in the building. Columns may vary in size depending on the floor level